

Clarke®



PLASTIC STAPLER/WELDER KIT MODEL NO: PSW3

PART NO: 3400773

USER INSTRUCTIONS

UK
CA | CE



ORIGINAL INSTRUCTIONS

GC01/25

INTRODUCTION

Thank you for purchasing this CLARKE product.

Before attempting to use this product, please read this manual thoroughly and follow the instructions carefully. In doing so you will ensure the safety of yourself and that of others around you, and you can look forward to your purchase giving you long and satisfactory service.

This product has been designed to give long and trouble free service. If, however, having followed the instructions in this booklet carefully, you encounter problems take the unit to your local CLARKE dealer.

The PSW3 Stapler is ideal for plastic crack repairs and reinforcement with different staples used in various situations.

Staples are supplied in different sizes (see page 9) and after implanting, the exposed staple parts can be easily broken off after the plastic areas are melted. The staples are stainless steel so will not corrode in the future, thereby compromising the strength of the repair.

The PSW3 Stapler incorporates overheating/overloading protection and a high-brightness LED light.



SPECIFICATIONS

Model	Specification
Dimensions (L x W x H)	200 x 50 x 30 mm - product 200 x 175 x 50mm - storage case
Weight	163 g (device only)
Charging voltage	5VDC - 2A
Ingress protection	IP20
Charging cable length	1.0 m
Charging cable type	USB to USB-C lead
Charging time	3.5 hours@1A / 2 hours @2A
Run time	200-500 staples (fully charged)
Maximum material thickness	2.87 mm
Battery	3.7V 2600 mAh Li-ion
Heating element temperature	500°C max

GUARANTEE

This product is guaranteed against faulty manufacture for a period of 12 months from the date of purchase. Please keep your receipt which will be required as proof of purchase.

This guarantee is invalid if the product is found to have been abused or tampered with in any way, or not used for the purpose for which it was intended.

Faulty goods should be returned to their place of purchase, no product can be returned to us without prior permission.

This guarantee does not effect your statutory rights.

GENERAL SAFETY WARNINGS



WARNING: READ ALL SAFETY WARNINGS AND ALL INSTRUCTIONS. FAILURE TO FOLLOW THE WARNINGS AND INSTRUCTIONS MAY RESULT IN ELECTRIC SHOCK, FIRE AND/OR INJURY.

WORK AREA SAFETY

1. Keep the work area clean and well lit. Cluttered or dark areas invite accidents.
2. Keep children and bystanders away while operating a power tool. Distractions can cause you to lose control.
3. To prevent fire, **DO NOT** use this device in a flammable and explosive environment.
4. Due to the gasses given off by the melting of the plastic the device should be used in a well ventilated workplace.
5. If you need to use the device in the car paint booth always extract the contaminated air from the paint booth in advance.

ELECTRICAL SAFETY

1. **DO NOT** expose power tools to rain or wet conditions. Water entering a power tool will increase the risk of electric shock.
2. **DO NOT** abuse the charging lead. Keep the cable away from heat, oil or sharp edges. Damaged or entangled cables increase the risk of electric shock.

PERSONAL SAFETY

1. Stay alert, watch what you are doing and use common sense when operating a power tool. **DO NOT** use a power tool while you are tired or under the influence of drugs, alcohol or medication. A moment of inattention while operating power tools may result in personal injury.
2. **DO NOT** overreach. Keep proper footing and balance at all times. This enables better control of the power tool in unexpected situations.
3. Dress properly. **DO NOT** wear loose clothing or jewellery.

GENERAL POWER TOOL USE AND CARE

1. **DO NOT** force the power tool. Use the correct power tool for your application. The correct power tool will do the job better and safer at the rate for which it was designed.

2. **DO NOT** use the power tool if the switch does not turn it on and off. Any power tool that cannot be controlled with the switch is dangerous and must be repaired.
3. Store idle power tools out of the reach of children and **DO NOT** allow persons unfamiliar with the power tool or these instructions to operate the power tool. Power tools are dangerous in the hands of untrained users.
4. Use the power tool, accessories etc. in accordance with these instructions, taking into account the working conditions and the work to be performed. Use of the power tool for operations different from those intended could result in a hazardous situation.

STAPLER/WELDER USE AND CARE





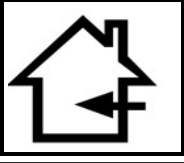


1. **DO NOT** look directly into the LED light when it is switched on.
2. **ALWAYS** unplug the charging lead when not in use.
3. **ALWAYS** ensure this device is kept out of children's reach.
4. The staples used with this device are made of special materials, not ordinary steel wire. When the staples are used up, please contact your CLARKE dealer, otherwise any malfunction caused by the use of staples of other materials will not be covered by the warranty.
5. Wear gloves in operation to prevent burns and wear protective glasses to protect your eyes from flying staple ends if end cutting pliers are used
6. Wear protective glasses and dust mask during the any sanding operations when finishing off the repair.
7. The product is not suitable for pipeline products that require waterproof and sealing requirements for conveying liquids or gases.
8. Release the trigger immediately to stop heating once the heated staple turns red in the operation.

BATTERY TOOL USE AND CARE

1. This product utilises a rechargeable Lithium-ion battery that can rupture, ignite and cause serious injury if abused.
2. **DO NOT** puncture or damage the batteries.
3. **DO NOT** dispose of this product in a fire or water.
4. Recharge only with the charging cable supplied.
5. Under abusive conditions, liquid could be lost from the battery; avoid contact. If contact accidentally occurs, flush with water. If liquid contacts eyes, additionally seek medical help. Liquid ejected from the battery may cause irritation or burns.

SAFETY SYMBOLS

The following safety symbols may be found on this product packaging.

	Read instruction manual before use	 Li-ion	WEEE Symbol (lithium ion batteries)
	Do not immerse battery in water. Harmful to aquatic life.		Do not Incinerate batteries
	Indoor use only		Hot surfaces
	Wear protective gloves		

ENVIRONMENTAL RECYCLING POLICY



Do not dispose of this product with general household waste. All tools, accessories and packaging should be sorted, taken to a recycling centre and disposed of according to the laws governing Waste Electrical and Electronic Equipment.

Through purchase of this product, the customer is taking on the obligation to deal with the WEEE in accordance with the WEEE regulations in relation to the treatment, recycling & recovery and environmentally sound disposal of the WEEE.

In effect, this means that this product must not be disposed of with general household waste. It must be disposed of according to the laws governing Waste Electrical and Electronic Equipment (WEEE) at a recognised disposal facility.

The Lithium Ion battery falls under the Waste Batteries and Accumulators Regulations 2009 and should be disposed of in a controlled manner if necessary.

CHARGING USING THE USB CABLE

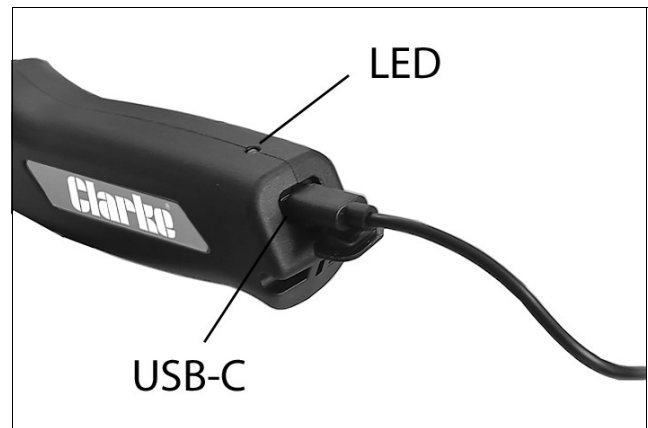
Charge the battery before using it for the first time.

1. Insert the charger lead into the USB type C charging jack socket and the other end into a suitable USB socket.

- The LED will flash RED when the unit is charging.
- CHARGING TIME- 3.5 hours

To ensure maximum life from the battery, recharge after every use if possible and thereafter, once every three months. Always avoid leaving the stapler battery in a state of discharge which would lead to reduced performance and to premature battery failure.

The stapler should not be operated while using the charging cable.

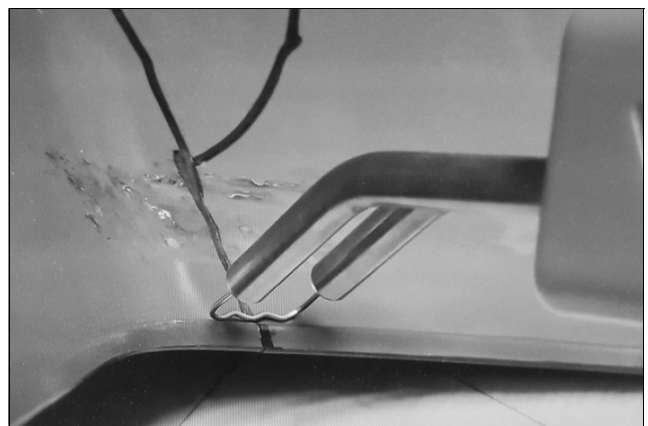
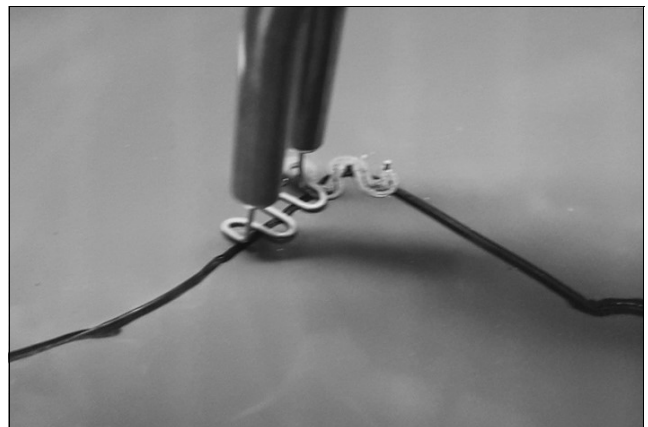


LED LAMP STATUS

- The green "working" LED will be on when the unit is fully charged. This can be considered a "standby" condition.
- During charging the red light will be flashing
- During Normal working the LED will be on.
- Overload/overheat protection the LED will be flashing red
- For a low battery the red LED will be on.

OPERATION

1. According to the shape of the damage to be repaired, select the corresponding staple from those supplied (or from the available selection on page 9) and insert into the tips of the device.
2. If the plastic to be repaired has a long crack which is likely to extend over time, drill a small hole at the end of the crack to prevent this happening before beginning the stapled repair.
3. Press the red power switch to energise the heating elements
 - The green LED lamp will come on.
4. Holding the device tightly, align the staple with the crack to be repaired.
 - The staple will be heated up and melt into the plastic within a few seconds.
5. Begin working at the beginning of any long crack or split and add more staples, progressing outward.
6. Position the device so that the transverse part of the staple sinks into the plastic to be repaired until completely covered.
 - Take care not to push the staple in too far, so as to risk breaking through the whole thickness of the plastic component.
7. Give the device a very slight twist to help the staple become completely embedded under plastic to prevent any chance of it pulling out.
8. Use a straight staple when repairing along the edge of the workpiece.



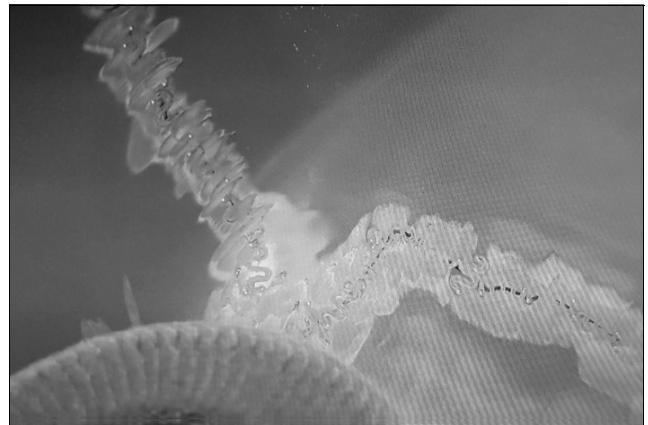
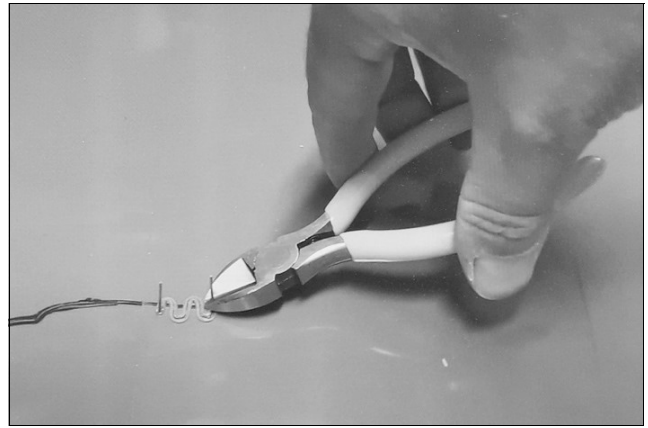
9. Cut off the exposed part of the staple or rock it back and forth with your hands until it breaks off.

- A pair of end cutting pliers may be very useful for this. If using these, wear safety glasses to protect from flying staple ends.

10. Use the hot tip to heat the welds and any protruding plastic next to it wrapping and levelling with melted plastic to strengthen the connection.

11. Once the repair is completed, the staple ends and rough plastic can be cleaned off using a sanding disc or similar tool but taking care not to remove any significant material from the repaired plastic component.

CAUTION;-the underside of the repair may become hot while working.



STAPLER CONSUMABLES

No	Qty	Staple type	
1	50	0.6 mm outside corner staples for repairing outside corners. Part No;-1800208	
2	50	0.8 mm inside corner staples for repairing inside corners. Part No;-1800209	
3	50	0.6 mm flat staples for repairing flat surfaces;- Part No;-1800211	
4	50	0.6 mm wave staples for repairing flat plastic areas that need extra reinforcement;- Part No;-1800213	
5	50	0.8 mm flat staples for repairing flat surfaces. Part No;-1800212	
6	50	0.8 mm wave staples for repairing flat plastic areas that need extra reinforcement;- Part No;-1800214	

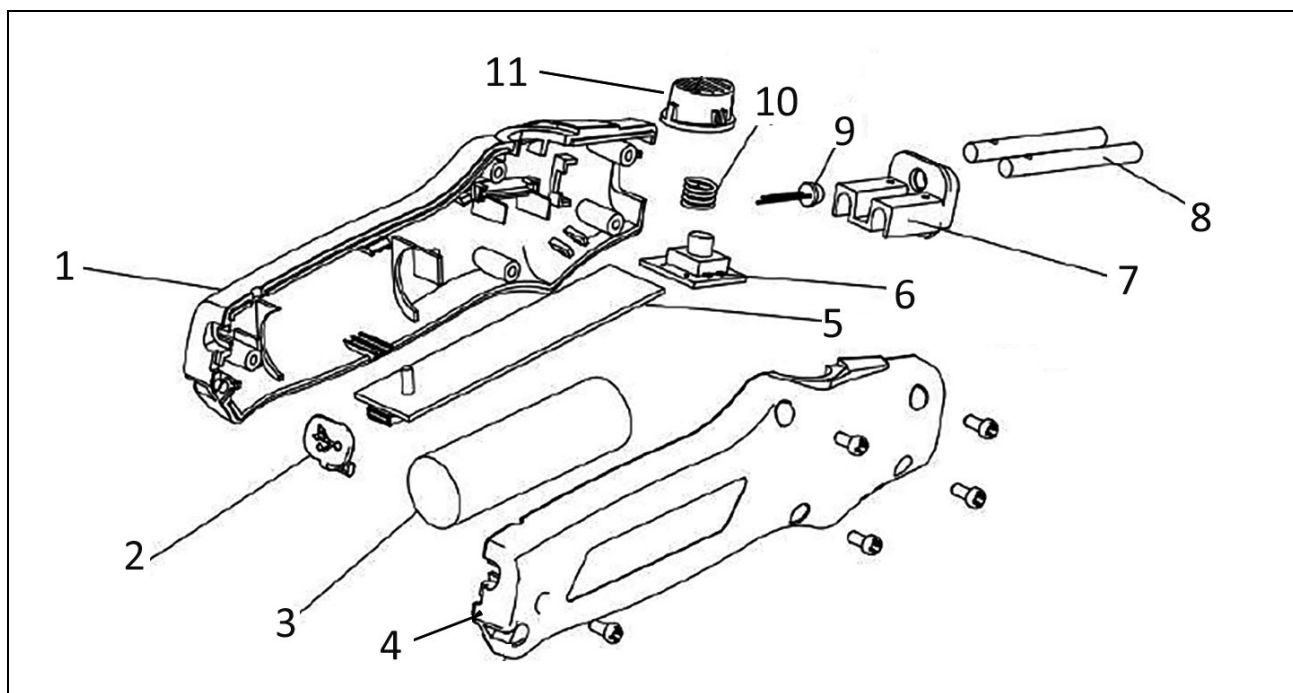
Consumable items listed are available from your CLARKE dealer.

CARE AND MAINTENANCE

1. The device should be stored in a dry and cool place. When used outdoors, avoid prolonged exposure to the sun.
2. Avoid using solvents when cleaning plastic parts, (most plastics are susceptible to damage from the various types of commercial solvents).
3. In order to ensure good contact, keep the small holes for the staples clean.
4. Fully charge the battery every three months to maintain battery performance if it is not used for a long time.
5. Check the charging cable to ensure it is sound and free from cracks etc.

NOTE: If the battery requires replacement or if any repairs are required take the unit to your CLARKE dealer.

COMPONENT PARTS



1	Left plastic shell
2	Charging port cover
3	Battery
4	Right plastic shell
5	Main printed circuit board
6	Switch circuit board

7	Fixing holder for heating rods
8	Heating rods
9	LED light
10	Switch spring
11	Power switch cap

DECLARATIONS OF CONFORMITY

CE

Clarke[®]
INTERNATIONAL
Fitzwilliam Hall, Fitzwilliam Place, Dublin 2

DECLARATION OF CONFORMITY

This is an important document and should be retained.

We hereby declare that this product(s) complies with the following legislation:

2023/1542 *Battery Regulation*
2014/30/EU *Electromagnetic Compatibility Directive*
2011/65/EU *Restriction of Hazardous Substances (RoHS) Directive*

The following standards have been applied to the product(s):

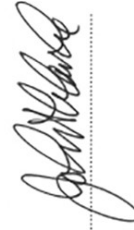
IEC 62321-3-1:2013, IEC 62321-5:2013, IEC 62321-6:2015, IEC 62321-8:2017, IEC 62321-7-1:2015,
IEC 62321-4:2013+AMD1:2017, EN IEC 55014-1:2021, EN IEC 55014-2:2021, IEC 62321-7-2:2017

The technical documentation required to demonstrate that the product(s) meet(s) the requirement(s) of the aforementioned legislation has been compiled and is available for inspection by the relevant enforcement authorities.

The CE mark was first applied in: 2024

Product Description: Hot Stapler
Model Number(s): PSW3
Serial/Batch Number: Refer to product/packaging label
Date of Issue: 27/09/2024

Signed:



J.A. Clarke
Director

PSW3 CE Clarke DOC:092724

Page 1 of 1

UK
CA

Clarke[®]
INTERNATIONAL
Hemmall Street, Epping, Essex, CM16 4LG

DECLARATION OF CONFORMITY

This is an important document and should be retained.

We hereby declare that this product(s) complies with the following legislation:

The Batteries and Accumulators (Placing on the Market) Regulations 2008
The Electromagnetic Compatibility Regulations 2016
The Restriction of the Use of Certain Hazardous Substances in Electrical and Electronic Equipment Regulations 2012

The following standards have been applied to the product(s):

IEC 62321-3-1:2013, IEC 62321-5:2013, IEC 62321-6:2015, IEC 62321-8:2017, IEC 62321-7-1:2015,
IEC 62321-4:2013+AMD1:2017, EN IEC 55014-1:2021, EN IEC 55014-2:2021, IEC 62321-7-2:2017

The technical documentation required to demonstrate that the product(s) meet(s) the requirement(s) of the aforementioned legislation has been compiled and is available for inspection by the relevant enforcement authorities.

The UKCA mark was first applied in: 2024

Product Description: Hot Stapler
Model Number(s): PSW3
Serial/Batch Number: Refer to product/packaging label
Date of Issue: 27/09/2024

Signed:



J.A. Clarke
Director

PSW3 UKCA Clarke DOC:092724

Page 1 of 1

A SELECTION FROM THE VAST RANGE OF

Clarke®

QUALITY PRODUCTS



AIR COMPRESSORS
From DIY to industrial, Plus air tools, spray guns and accessories.

GENERATORS
Prime duty or emergency standby for business, home and leisure.

POWER WASHERS
Hot and cold, electric and engine driven - we have what you need

WELDERS
Mig, Arc, Tig and Spot. From DIY to auto/industrial.

METALWORKING
Drills, grinders and saws for DIY and professional use.

WOODWORKING
Saws, sanders, lathes, mortisers and dust extraction.

HYDRAULICS
Cranes, body repair kits, transmission jacks for all types of workshop use.

WATER PUMPS
Submersible, electric and engine driven for DIY, agriculture and industry.

POWERTOOLS
Angle grinders, cordless drill sets, saws and sanders.

STARTERS/CHARGERS
All sizes for car and commercial use.



PARTS & SERVICE: 0208 988 7400

Parts Enquiries
Parts@clarkeinternational.com

Servicing & Technical Enquiries
Service@clarkeinternational.com

SALES: UK 01992 565333 or Export 00 44 (0)1992 565335

Clarke® INTERNATIONAL Hemnall Street, Epping, Essex CM16 4LG
www.clarkeinternational.com